

# ***WELCOME TO HARDWICK PRIMARY NURSERY***



## **Introduction**

**We would like to introduce you to our Nursery and some of the activities your child will enjoy with us. If you have any further questions please do not hesitate to ask. We are always here to help.**

**Mrs Grover is the Nursery Teacher and Mrs Bailey is the Nursery Nurse. Other Teaching Assistants also work in the Nursery. They all work closely with Miss Basham the Reception Teacher. Nursery and Reception children are all part of what we call the Early Years Foundation Stage.**

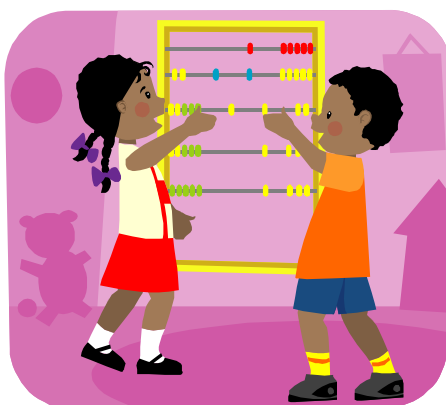
**Together we aim to create a happy, caring, stimulating and enjoyable learning environment, providing a positive start to your child's school career.**

**At Hardwick we welcome parents, who often help in school. However, please be aware that it is school policy that parents do not assist in the same class as their child. If you do wish to help in school, please ask the office staff. We also often have students training for childcare qualifications.**

***NB - All staff and helpers are CRB checked.***

## **The 'Early Years Foundation Stage' – what is it?**

**The Early Years Foundation Stage curriculum builds on the children's developing experience and knowledge from home and pre school settings, continuing right through to the end of Reception year. The Early Years Foundation Stage teachers and support staff work closely together.**



**Curriculum guidelines are set down by the government.**

**Nursery topics for each term are planned around the Early Learning Principles and the six areas of learning as follows;**

- 1. Communication, Language and Literacy**
- 2. Problem Solving, Reasoning and Numeracy**
- 3. Personal, Social and Emotional skills**
- 4. Creative Development**
- 5. Knowledge and Understanding of the World**
- 6. Physical Development**

### **Assessing progress**

**The children are often so busy playing that they are completely unaware that they are fulfilling the Early Learning Goals!**

**The Nursery staff use their knowledge of child development when observing the children investigating, discovering, experiencing and creating through their play. This information helps when planning future activities to extend the children's skills and build their education. Each child's progress is assessed throughout their time in the Early Years Foundation Stage. In the Nursery class this is done through assessments and observations which are recorded on an ongoing basis.**

**In their Reception year, observations and assessments are recorded electronically in the e-profile, which is also updated on an ongoing basis.**

**All records of your child's achievements are available for you to look at and opportunities are scheduled for you to chat with the teacher.**



### **How we run the Early Years Foundation Stage**

**Children are offered a place in the Nursery according to criteria laid down by the Local Authority. Each term a meeting takes place with the Early Years Advisory Teacher to agree places and numbers. Children usually spend three terms in the Nursery.**

**Based on the age and number of pupils each term, the Nursery teacher decides whether your child will be offered a morning or afternoon session and informs parents/carers in writing. This can vary from term to term. The morning session is from 8.45 a.m. until 11.45 a.m. and the afternoon session is from 12.20 until 3.20 p.m.**

**Under the current system in Suffolk, your child will start *full time* school in the term in which they become five, e.g. a child with a birthday in June starts school at the beginning of the summer term (April). They leave the Nursery and join the Reception class for the completion of their Early Years Foundation Stage. Your child may spend one, two or three terms in Reception, depending upon their date of birth. However, as of September 2011, all 4 year olds will be offered a full time place in Reception, regardless of when they turn five. You will receive more information about this in future.**



### **Induction and settling in**

**Before your child comes to Nursery, you will be invited to meet with the teacher. We have an open afternoon when you can visit us together with your child. If you would like to visit at another time please phone the school.**

**When settling in, the staff will support you and your child with the transition from home or preschool. We respect all children as individuals and appreciate you know your child best. Some children take longer to settle than others and we will support you in helping your child settle. Rest assured all children settle eventually!**

**The routine at the beginning of each session is very simple and usually the same! The door is opened and you are invited into nursery to help your child with self-registration, sorting out possessions (book bags, coats, etc) and choosing a book to take home to share.**

**Please ensure your child has been to the toilet before you leave the Nursery! When you are ready to go please tell your child that you are going and that you will be back, and that they mustn't worry about you being lonely without them.....and then go!! The staff are always there to help.**



**It is very important that we can contact you at any time, please ensure we have up to date telephone numbers.**

**If your child is unwell please phone the school as early as possible on 01284 755424. We appreciate knowing that your child will be absent and it helps us know what ‘bugs’ are about. Please phone the school office as a matter of urgency if you are unforeseeably late collecting your child. If a different adult is collecting your child please note this and sign on our clipboard at the beginning of each session. Children thrive on routine and we wish to prevent them becoming upset if this is disrupted.**



**Children begin their learning at home and Nursery extends this. Parents, carers and family are such an important part of a child’s life. We aim to start a vital partnership between home and School. We value your contribution, advice and help.**

**If you have a change in family circumstance, please try to let us know. We don’t want to pry but don’t want to say the wrong thing and upset you or your child.**



We encourage the children to be as independent as possible. You can help by encouraging them to:

- Go to the toilet, wash and dry their hands themselves
- Try to undress and dress
- Put on and do up coats
- Organise their own belongings, e.g. book bags
- Play turn-taking games such as: lotto, dominoes, snap, snakes and ladders, noughts and crosses, observation and memory games.
- Remember to say please and thank you. Independent social skills are the foundation to sharing and learning.

At home time the Nursery staff ensure that each child is collected by the appropriate adult and go home safe and happy.

### Other information

- The Nursery is part of the National Fruit Scheme, free fruit and milk are shared during snack time, water is available for your child at any time.
- Every school occasionally has problems with head lice. This is quite normal. It is important that you check your child's hair regularly for head lice and nits. Please notify the Nursery staff if you have a problem and don't be embarrassed, we have all experienced this inconvenience! We appreciate your help with this issue and if you would like further guidance we do have leaflets in the office, please ask for one.
- Although uniform is not compulsory, we encourage children to wear burgundy school sweatshirts which are available from the office, priced £8.00 (with school logo) or from other outlets if the colour is available. We find that most children enjoy wearing their school sweatshirts and it helps them feel part of the school community, and they also feel quite grown up! Children should wear sensible shoes because we love running, jumping and climbing! A warm coat and wellies in the winter, a hat and sun screen (pre-applied) in summer, are essential as we play outside every day.
- **PLEASE LABEL CLOTHES AND BELONGINGS!**
- We have lots of toys at Nursery so unless children have been asked to bring in something specific relating to topic work, children should leave personal possessions at home. Experience shows us that things often get lost or broken and this can cause lots of unnecessary distress.



### **Conclusion**

**The Nursery class is the first step in your child's school career. We believe it is the most important stage where self confidence, independence, a positive attitude to learning, co-operation with others, with fun and enthusiasm develop a holistic identity, enabling your child to reach their full potential.**

**Please approach the staff with any worries or concerns that you may have, *together* we can provide the best possible foundation for your child's education.**

